

# iUAP-AC-M

802.11AC Indoor/Outdoor Wi-Fi Access Point

# iUAP-AC-M

## 802.11AC Indoor/Outdoor Wi-Fi Access Point

---

### Product Introduction

The gigabit dual-band indoor/outdoor access point iUAP-AC-M offers a concurrent data rate as high as 1167 Mbps. Equipped with 2 omni-directional high-gain antennas, iUAP-AC-M provides a maximum coverage radius of 200 meters. iUAP-AC-M can be installed either on the wall or around a pole. iUAP-AC-M can meet different requirements by connecting antennas of different specifications to the standard RP-SMA connectors. With the IP65 enclosure, iUAP-AC-M is designed for wireless coverage in factories, warehouses and other harsh outdoor environments.



## Key Features

---

- Durable IP65 enclosure for outdoor Wi-Fi applications.
- MU-MIMO technology for high throughput.
- Concurrent dual-band data rate up to 1167 Mbps (2.4 GHz: 300 Mbps; 5 GHz: 867 Mbps).
- Detachable antennas and 2 RP-SMA connectors.
- Coverage radius of 200 meters.

## Product Features

---



### IP65 protection

Professional materials and design guarantee iUAP-AC-M an IP65 enclosure for harsh environments both indoors and outdoors.



### IEEE 802.11ac Wave2 and MU-MIMO

Powered by MU-MIMO technology, a single iUAP-AC-M can communicate with multiple wireless clients at the same time, letting you enjoy higher throughput and better experience.

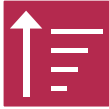


### Dual-band for more connected clients

iUAP-AC-M allows clients that support either 2.4 GHz or 5 GHz band, or both to connect to it at the same time, tripling the quantity of connected clients of traditional single-band AP.

## Product Features

---



### High-gain omni-directional antennas

Equipped with two 5 dBi high-gain omni-directional antennas, iUAP-AC-M provides a maximum coverage radius of 200 meters. iUAP-AC-M can meet different requirements by connecting antennas of different specifications to the standard RP-SMA connectors.



### Built-in RF for intelligent optimization

Featuring various anti-interference algorithms, the built-in RF enables iUAP-AC-M to evenly allocate bandwidth resources for multiple users, filter interference, and optimize data rate, offering you a guaranteed signal strength and reliable wireless experience.



### VLAN tagging for SSID

iUAP-AC-M allows you to set multiple SSIDs and add VLAN tags for SSIDs, thus protecting your network.



### Standard PoE sourcing and DC power supply for easy deployment

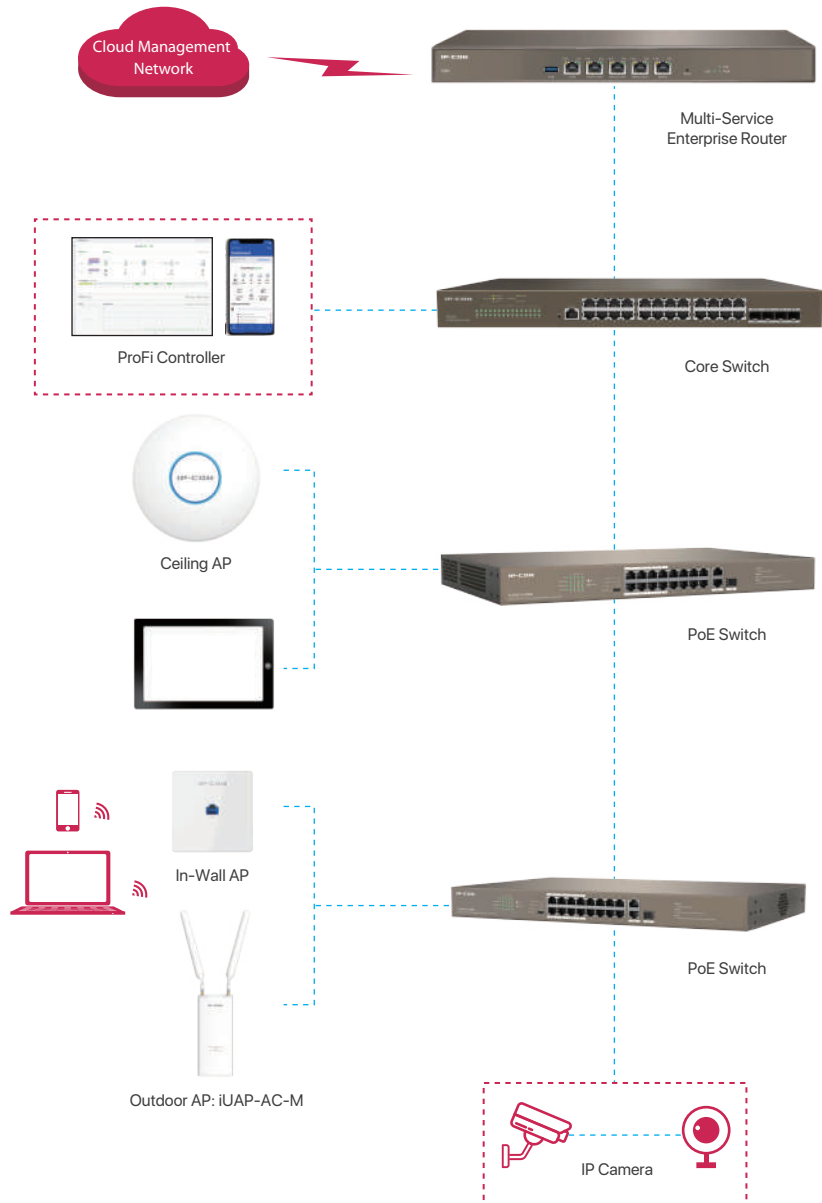
You can use an IEEE 802.3at-compliant PoE sourcing equipment, or a 24V DC power adapter to power on iUAP-AC-M.



### Centralized management

The ProFi Controller makes it easy to manage and monitor the whole ProFi devices in a real-time manner and the cloud services enable a remote and secure access free from the restrictions of device location.

# Application Scenarios



# Packaging

Product Information	
Model	iUAP-AC-M
Appearance	Pole Mounting and Wall Mounting
Dimensions	194.7* 83* 42.1 mm
Hardware Specifications	
Frequency band	2.4 GHz, 5 GHz
Wireless standards	IEEE 802.11a, IEEE 802.11b, IEEE 802.11g, IEEE 802.11n, IEEE 802.11ac
2.4 GHz data rate	1 - 300 Mbps
5 GHz data rate	6 - 867 Mbps
Ethernet port	1*10/100/1000 Base-TX port
Button	1*Reset
LED indicator	1*SYS
Waterproof level	IP65
Lightning protection	6000 V
Max. power consumption	11.5 W (Full-load)
Power supply standard	IEEE 802.3af/at & 24V, 0.5A Passive PoE
Antenna	2*5dBi, RP-SMA Connector
2.4 GHz Max. output power	26 +/- 1.5 dBm
2.4 GHz 802.11n (MCS7) RX sensitivity	26 +/- 1.5 dBm
5 GHz Max. output power	26 +/-1.5 dBm
802.11b RX sensitivity	-93 dBm
2.4 GHz 802.11n (MCS7) RX sensitivity	-72 dBm
5 GHz 802.11a RX sensitivity	-93 dBm
5 GHz 802.11n (MCS7) RX sensitivity	-74 dBm
Software Specifications	
Operating modes	AP, Client+AP
Hide SSID	Supported
Max. No. of SSID	2.4 GHz: 8, 5 GHz: 4
Max. connected clients	2.4 GHz: 128, 5 GHz: 256
WEP	Supported
WPA-PSK	AES/TKIP

## Packaging

WPA2-PSK	AES/TKIP
WPA	Supported
WPA2	Supported
Access control	MAC address-based
Adjustable power transmit	Supported
Frequency analysis	Supported
AP isolation	Supported
Connected client control	Supported
RSSI threshold	Supported
WMM	Supported
VLAN tagging for SSID	Supported
Transmission power	Adjustable by 1 dBm
LED indicator control	Supported
Diagnostics tool	Ping, Traceroute
Scheduled reboot	Supported
Reboot at specified interval	Supported
Management	Web UI
System logs	Supported
Firmware upgrade	Local and AC upgrade
Reboot	Local and AC reboot
Reset	Local and AC reset
Backup configuration	Supported
Restore configuration	Supported
<b>Operating Environment</b>	
Default login IP address	192.168.0.254
Default user name	admin
Default password	admin
Operating temperature	-10°C - 45°C
Operating humidity	(10% - 90%) RH, non-condensing
Storage temperature	-30°C - 70°C
Storage humidity	(10% - 90%) RH, non-condensing



**IP-COM NETWORKS CO., LTD.**

Tower E3, No.1001, Zhongshanyuan Road,  
Nanshan District, Shenzhen, China. 518052  
Service: [info@ip-com.com.cn](mailto:info@ip-com.com.cn)  
Inquiry: [marketing@ip-com.com.cn](mailto:marketing@ip-com.com.cn)  
Tel: +86-755-27653089