

# BioEntry R2

## Compact Fingerprint Reader



Suprema BioEntry R2 is a compact fingerprint reader exclusively designed for centralized access control systems. Packed in a slim, million-type design, BioEntry R2 provides high-definition fingerprint image capture, minutiae extraction as well as dual-frequency multi RF card reading capability. Combined with Suprema's intelligent biometric controller, the CoreStation, BioEntry R2 completes biometrics-driven access control system with enhanced simplicity and level of security of centralized system topology.

## Features



### Multi RFID card reading

- LF(125kHz), HF(13.56MHz) dual-band
- Reads all primary card types (EM, MIFARE, MIFARE Plus, DESFire EV1/EV2, FeliCa, NFC)



### Field-proven fingerprint technology

- Latest Suprema fingerprint algorithm
- High-precision OP5 optical sensor



### Standardized communication

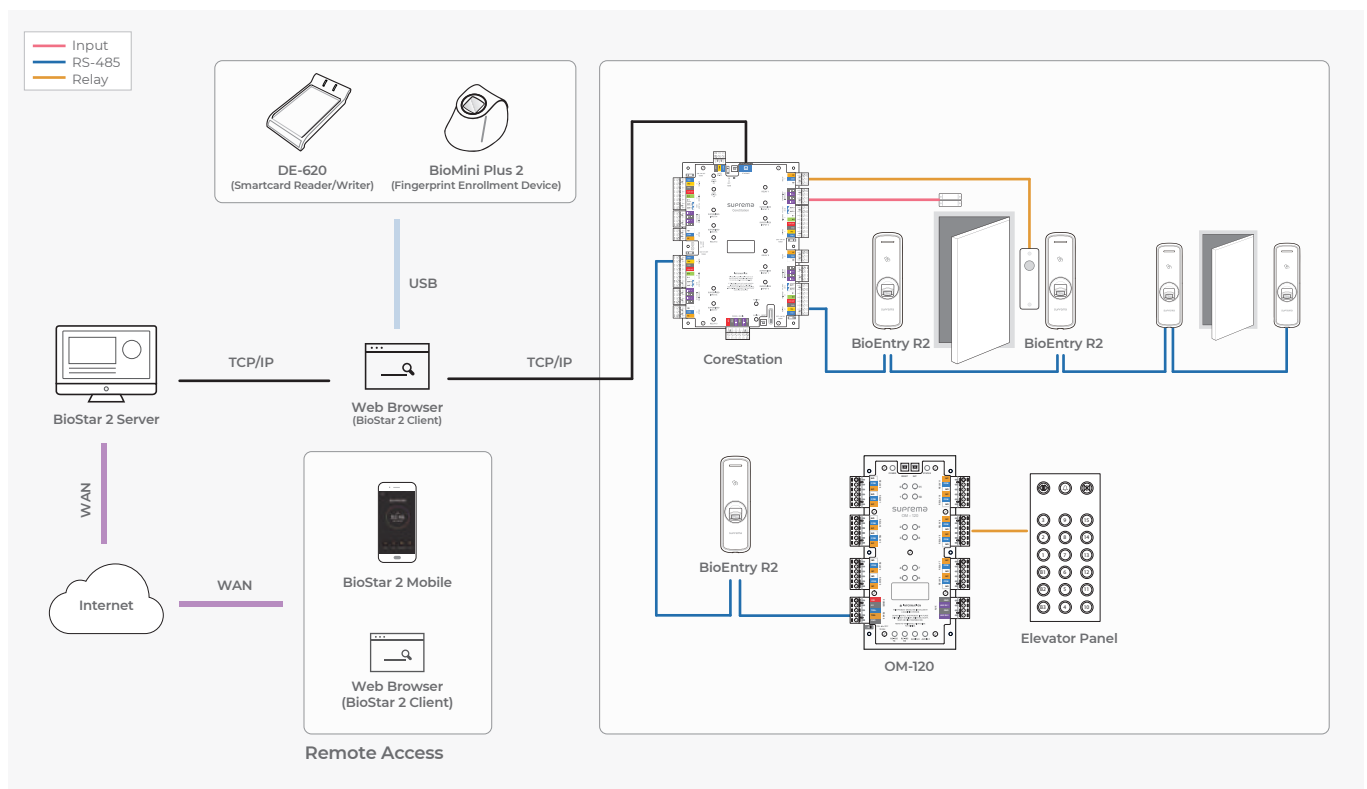
- Open Supervised Device Protocol (OSDP)

## Specifications

Model Name	BER2-OD
Biometric	Fingerprint
Sensor Type	Optical Sensor (OP6)
Template	SUPREMA / ISO 19794-2 / ANSI 378
Extractor / Matcher	MINEX certified and compliant
RF Option	125kHz EM & 13.56MHz MIFARE, MIFARE Plus, DESFire EV1/EV2*, FeliCa, NFC
CPU	1.0 GHz
Memory	32MB Flash + 32MB RAM
LED	Multi-Color
Sound	Multi-tone Buzzer
RS-485	1ch Slave, OSDP V2.1.6
Tamper	Supported
Power	DC 12V
Operating Temperature	-20°C ~ 50°C
Operating Humidity	0% ~ 80%, non-condensing
Dimensions (WxHxD, mm)	50 x 164 x 37.5
Weight	158g
Certificates	CE, FCC, KC, RoHS, REACH, WEEE

\* DESFire EV2 cards are supported by having backward compatibility of DESFire EV1 cards. CSN and smart card functions are compatible with BioEntry R2.

## System Configurations



**ProSecure.**

**Siège social:** 6 Résidence Zineb Rue Farazdaq, N° 2 Tanger

**Fixe:** 05 39 35 62 14

**Gsm:** 06 61 44 97 40

**E-mail:** prosecure.services@gmail.com

**Site:** www.pro-secure.ma